

SUMMARY

Citrix Workspace is an application used to connect to Citrix applications on TPC's network.

PREREQUISITES

- Installation requires administrative privileges on the computer.

PROCEDURE

1. In a web browser, go to [Download Citrix Workspace](#).
2. Click on the **Download Citrix Workspace app for Windows** button.
If you do not see this button, uninstall your existing Citrix Receiver and try again.

Citrix Workspace app 1911 for Windows

Release Date: Dec 3, 2019

Compatible with

Windows 10, 8.1, 7, 2008R2, Thin PC as well as Windows Server 2016, 2012, 2012R2 and 2019.

Download Citrix Workspace app for Windows

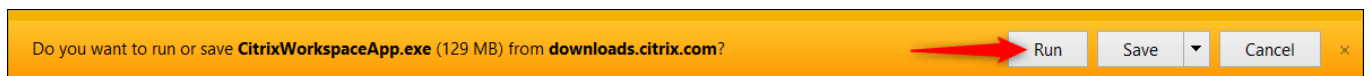
(129 MB - .exe)

Version: 19.11.0.50 (1911)

3. Open the **CitrixWorkspaceApp.exe** file from the previous step. The exact procedure varies depending which browser you are using. Follow one of the examples below:

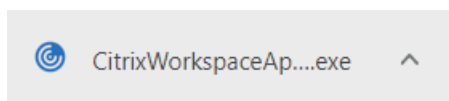
Internet Explorer

Click the **Run** button near the bottom of the screen.

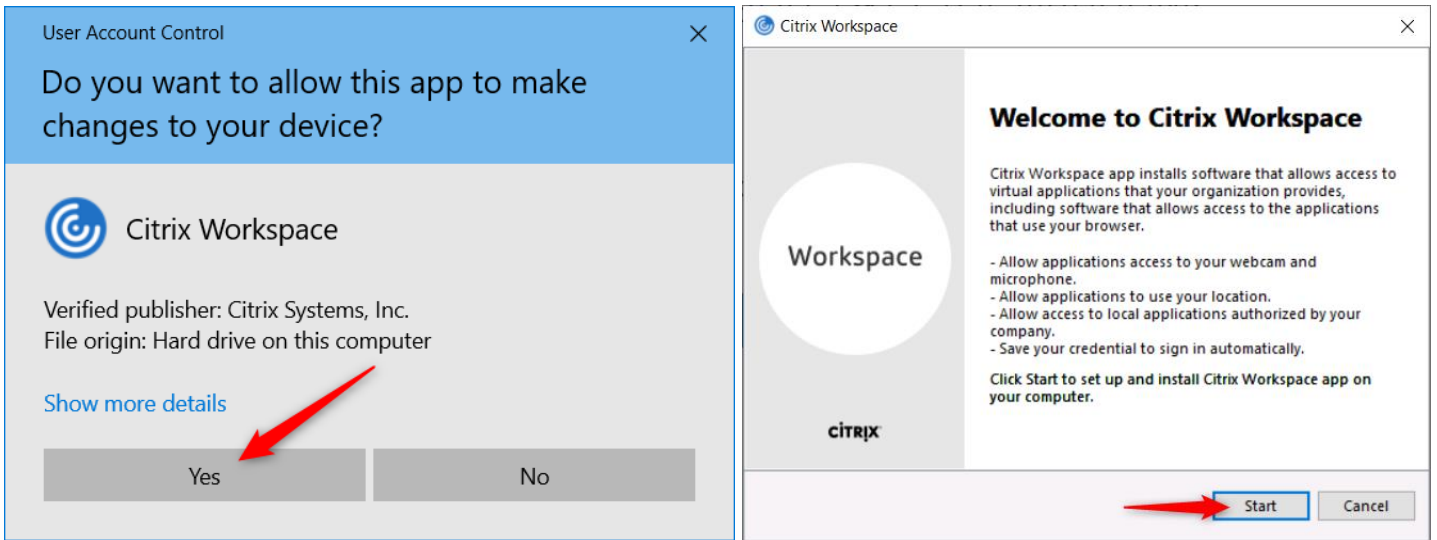


Chrome

Click **CitrixWorkspaceApp.exe** button near the bottom left corner of the screen.

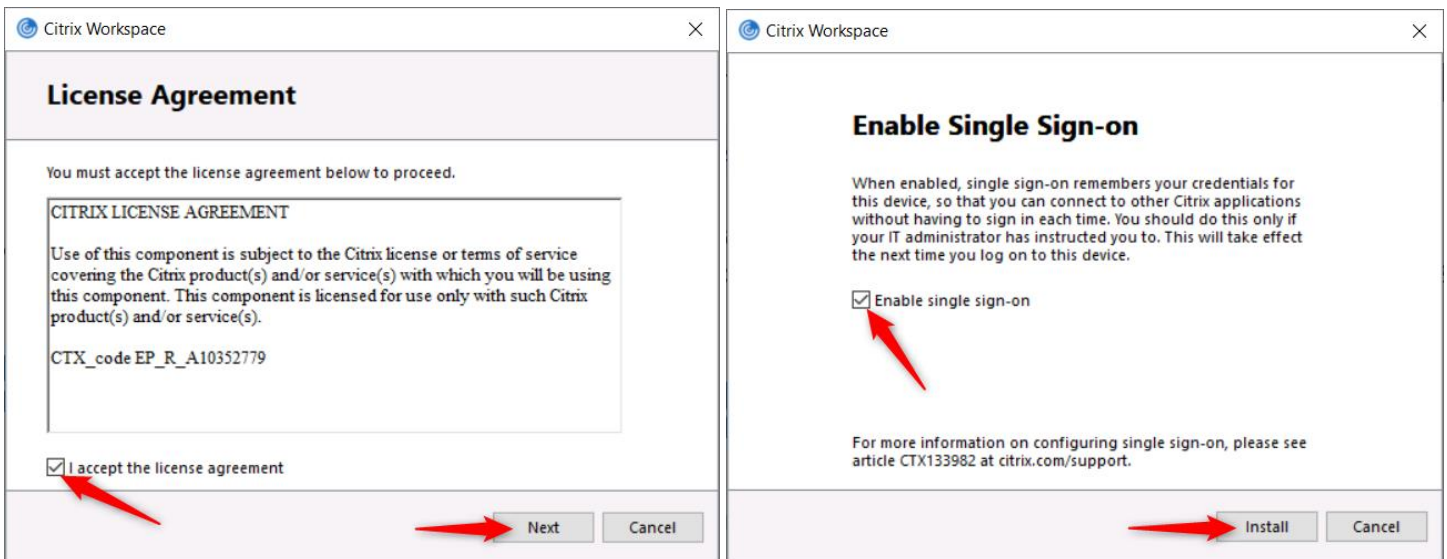


4. Select the **Yes** button.
 - On the next page select the **Start** button



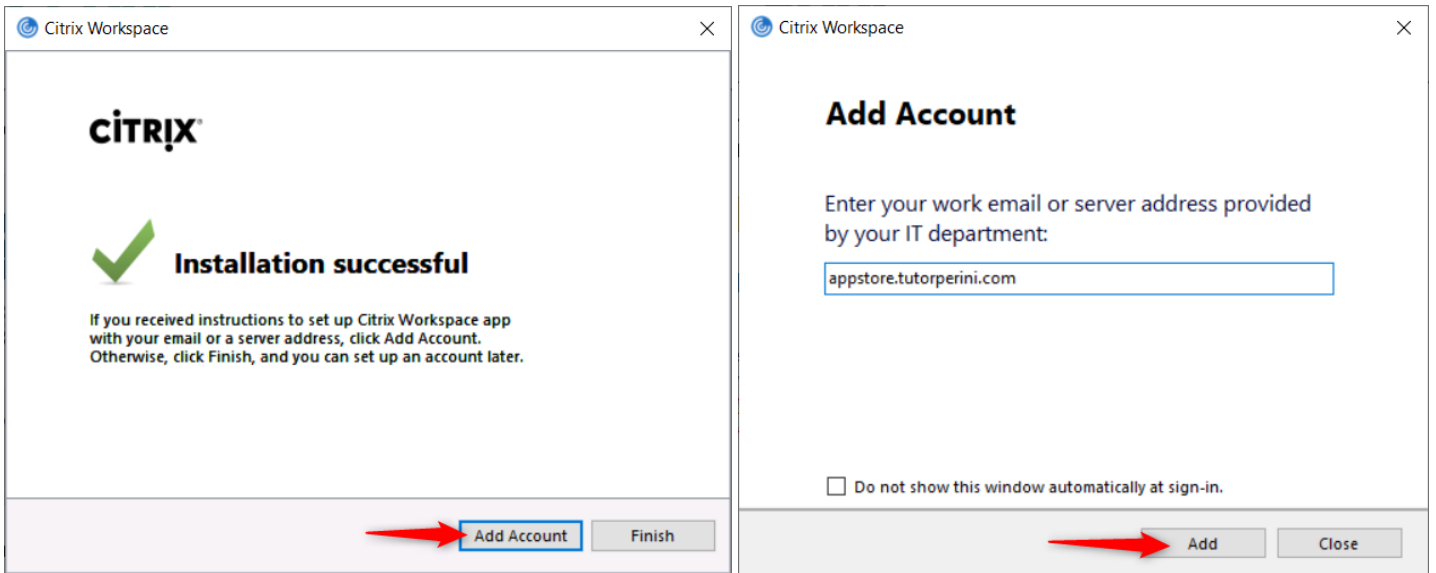
5. Check ***I accept the license agreement*** and select **Next**.

- On the next screen, Check ***Enable Single Sign-on***. Select the **Install** button.



6. When the install is complete, select **Add Account**.

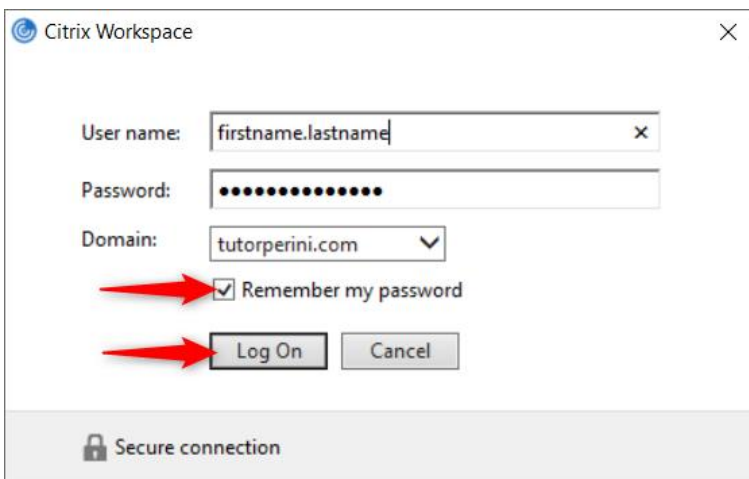
- On the next screen enter **appstore.tutorperini.com** and select **Add**



7. On the next screen, enter your user credentials.

- Check **Remember my password**
- Click the **Log On** button.

NOTE: This are the same username and password that you use for your e-mail and login to your computer



REFERENCE

Apple [Download Citrix Workspace](#)