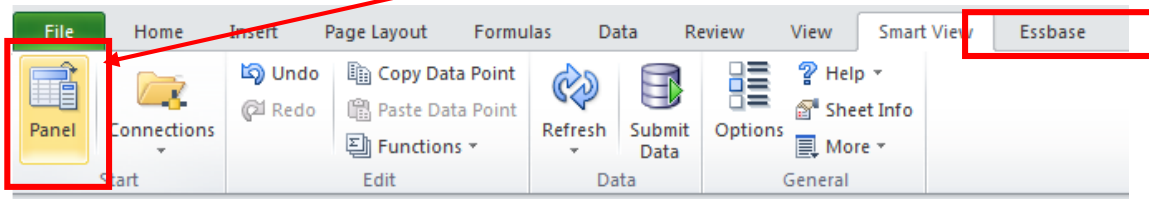


Essbase Adhoc Query:

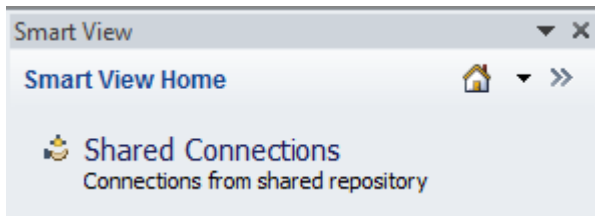
- 1) Please make sure your Essbase connection is active
 - a. Open Hyperion Smartview in Citrix



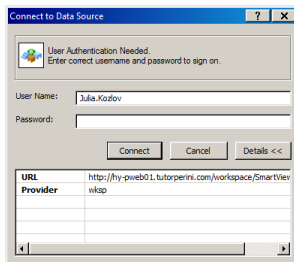
- b. Open the workbook in question (Earned Revenue and Profit for each BU)
 - c. In Smartview tab, click on panel



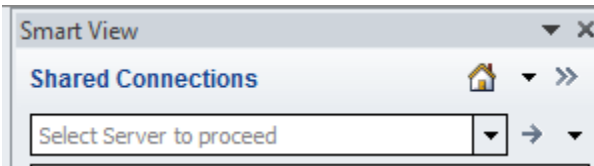
- d. Under Shared Connections:
 - i. Click on Shared Connection



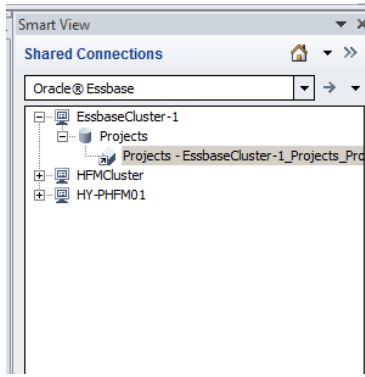
- ii. Connect to Data Source with HFM login information



- iii. Select Oracle Essbase in the "select server to proceed" drop down

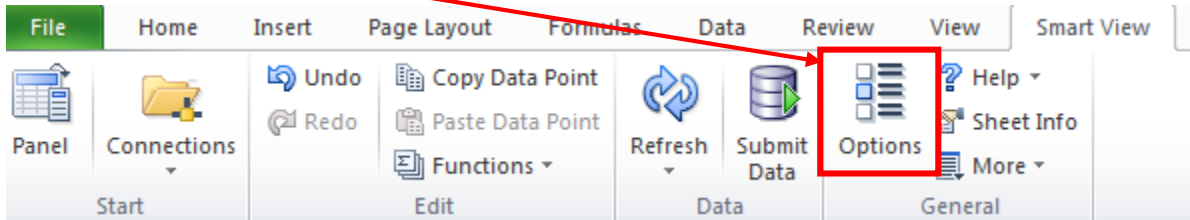


- iv. Double Click on EssbaseCluster-1
 - v. Double Click on Projects
 - vi. Double Click on Projects – EssbaseCluster-1 Projects

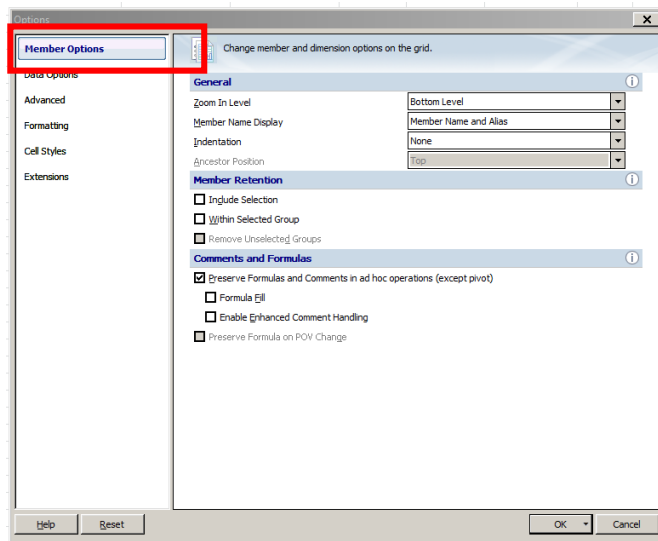


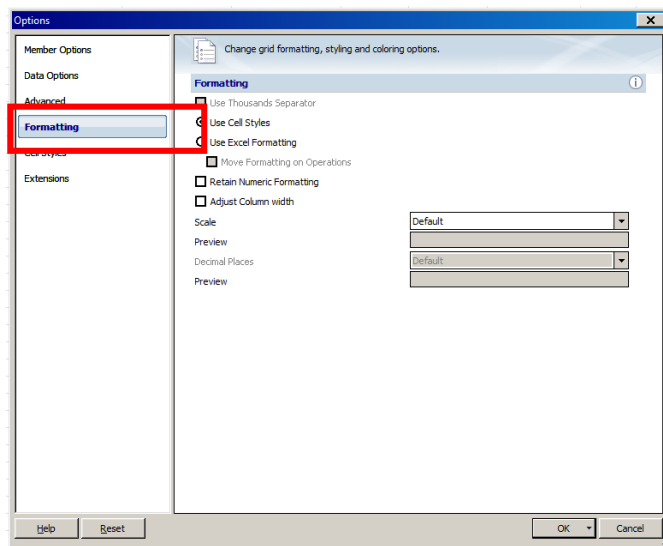
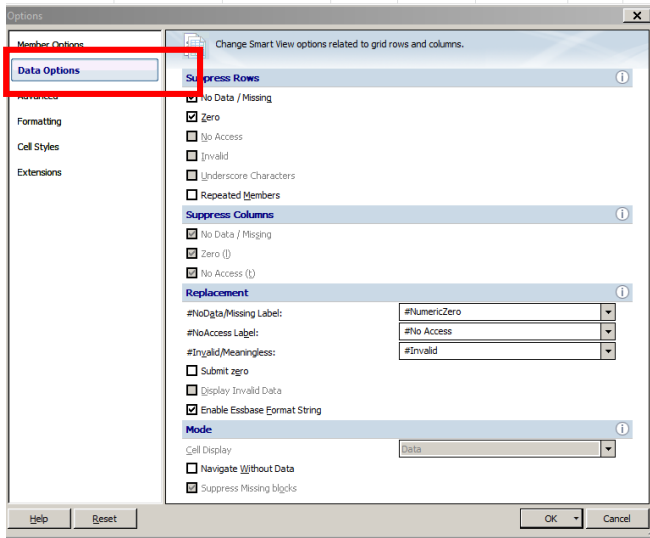
You will know that you are successful when you see an Essbase tab on your ribbon.

- 2) To make sure your options are set, click on Smart View tab
 - a. Click on Options



- b. Set options in **member options**, **data options** and **formatting options**:



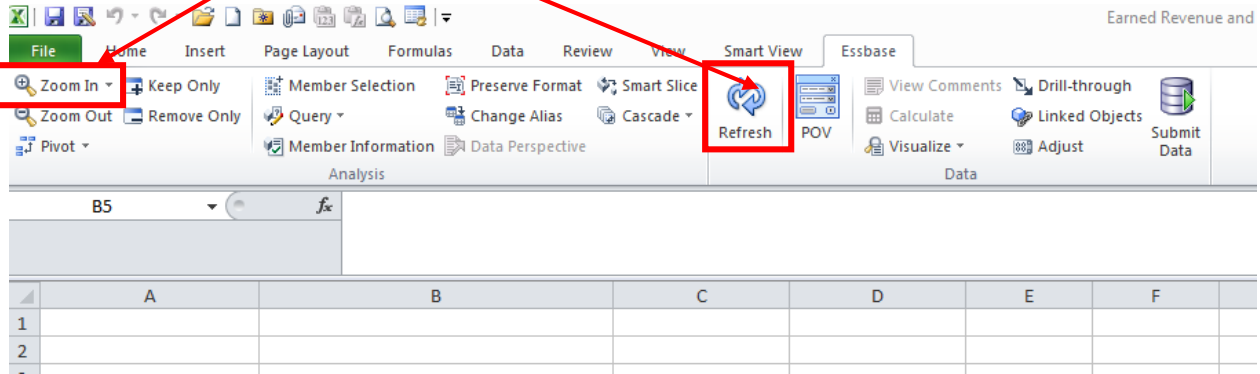


- c. Once all the options are set, click OK.
- 3) Once the Essbase ribbon is visible and your options are set, you are ready to use the workbook.

A	B	C	D	E	F	G	H	I	J
							2015	Total Actual	Periodic
						Earned Revenue	Earned Profit		
						May	May		
					Total Proje	20538830.82	2296792.34		

- a. Zoom in to the bottom level of cell A4 by clicking in to cell A4.

- b. Then go up to “zoom in” in the Essbase ribbon, and select “bottom level”. If your “zoom in” is not highlighted click “refresh” and type in your HFM login information.



- c. Repeat this action in cell C4, E4 and G4. This will give you all of your projects which should look something like this:

01701	01701	- Frontier-Kemper Constructors Inc.	Existing	Existing	Project N/A	Non Jobs				Job Stage N/A	Job Stage - N/A	
01701	01701	- Frontier-Kemper Constructors Inc.	Existing	Existing	10140400	10140400 - 0903-Oaktown Raises	FCD	FCD	FCD	FCD - Field Close - P&L Completed		
01701	01701	- Frontier-Kemper Constructors Inc.	Existing	Existing	10141000	10141000 - 1008-Sugar Camp Energy	FCD	FCD	FCD	FCD - Field Close - P&L Completed		
01701	01701	- Frontier-Kemper Constructors Inc.	Existing	Existing	10141200	10141200 - 1015-American Energy Corp	FCD	FCD	FCD	FCD - Field Close - P&L Completed		
01701	01701	- Frontier-Kemper Constructors Inc.	Existing	Existing	10141400	10141400 - 1017-Greenbrier Smokeless	FCD	FCD	FCD	FCD - Field Close - P&L Completed		
01701	01701	- Frontier-Kemper Constructors Inc.	Existing	Existing	10141700	10141700 - 1102-White Oak Resources	FCD	FCD	FCD	FCD - Field Close - P&L Completed		
01701	01701	- Frontier-Kemper Constructors Inc.	Existing	Existing	10142000	10142000 - 1109-Obayashi Raises	FCD	FCD	FCD	FCD - Field Close - P&L Completed		
01701	01701	- Frontier-Kemper Constructors Inc.	Existing	Existing	10142100	10142100 - 1110-Gibson County South	WUP	WUP	WUP	WUP - Final Wrap Up		
01701	01701	- Frontier-Kemper Constructors Inc.	Existing	Existing	10142200	10142200 - 1113-Williamson Energy	FCD	FCD	FCD	FCD - Field Close - P&L Completed		
01701	01701	- Frontier-Kemper Constructors Inc.	Existing	Existing	10142800	10142800 - 1205-Barrick Cortez Svr	FCD	FCD	FCD	FCD - Field Close - P&L Completed		
01701	01701	- Frontier-Kemper Constructors Inc.	Existing	Existing	10143000	10143000 - 1207-Warrior Coal	OPN	OPN	OPN	OPN - Open		
01701	01701	- Frontier-Kemper Constructors Inc.	Existing	Existing	10159900	10159900 - 1214-Consol Buchanan	OPN	OPN	OPN	OPN - Open		
01701	01701	- Frontier-Kemper Constructors Inc.	Existing	Existing	10160700	10160700 - 1306-Wilson County Holdin	OPN	OPN	OPN	OPN - Open		
01701	01701	- Frontier-Kemper Constructors Inc.	Existing	Existing	10192600	10192600 - 1315 Hudson Yards - Amtra	OPN	OPN	OPN	OPN - Open		
01701	01701	- Frontier-Kemper Constructors Inc.	Existing	Existing	10192702	10192702 - 1316 Hudson Yards - Caiss	OPN	OPN	OPN	OPN - Open		
01701	01701	- Frontier-Kemper Constructors Inc.	Existing	Existing	10211800	10211800 - 1318 - Chinatown Station	OPN	OPN	OPN	OPN - Open		
01701	01701	- Frontier-Kemper Constructors Inc.	Existing	Existing	10270900	10270900 - 14.01 - CM006	OPN	OPN	OPN	OPN - Open		
01701	01701	- Frontier-Kemper Constructors Inc.	Existing	Existing	10334200	10334200 - 1405-ACI Tygart Valley	OPN	OPN	OPN	OPN - Open		
01701	01701	- Frontier-Kemper Constructors Inc.	Existing	Existing	10445100	10445100 - 1410 Webster County Coal	OPN	OPN	OPN	OPN - Open		
01751	01751	- Frontier-Kemper Constructors ULC	New	New	10472500	10472500 - 1504 T2 Tunnel Water	OPN	OPN	OPN	OPN - Open		
01751	01751	- Frontier-Kemper Constructors ULC	Existing	Existing	Project N/A	Non Jobs				Job Stage N/A	Job Stage - N/A	
01751	01751	- Frontier-Kemper Constructors ULC	Existing	Existing	10153000	10153000 - C71-Seymour Cap - Labor	WUP	WUP	WUP	WUP - Final Wrap Up		
01751	01751	- Frontier-Kemper Constructors ULC	Existing	Existing	10280200	10280200 - C71- John Hart - Labor	OPN	OPN	OPN	OPN - Open		
01770	01770	- Frontier-Kemper Lakeshore	New	New	10451300	10451300 - 14.09 GAN Brakeman Cars	OPN	OPN	OPN	OPN - Open		
01770	01770	- Frontier-Kemper Lakeshore	New	New	10461100	10461100 - 1503 MARSAs Ore Handling	OPN	OPN	OPN	OPN - Open		
01770	01770	- Frontier-Kemper Lakeshore	New	New	10446600	10446600 - 8015-LakeShore Small Jobs	OPN	OPN	OPN	OPN - Open		
01770	01770	- Frontier-Kemper Lakeshore	New	New	10446800	10446800 - 9015-LakeShore Field Serv	OPN	OPN	OPN	OPN - Open		
01770	01770	- Frontier-Kemper Lakeshore	Existing	Existing	10146600	10146600 - 1212-Agnico Eagle Mexico	OPN	OPN	OPN	OPN - Open		
01770	01770	- Frontier-Kemper Lakeshore	Existing	Existing	10334500	10334500 - 1407-Webster County Coal	OPN	OPN	OPN	OPN - Open		
01770	01770	- Frontier-Kemper Lakeshore	Existing	Existing	10441400	10441400 - 1412-Warrior Coal LLC	OPN	OPN	OPN	OPN - Open		
01770	01770	- Frontier-Kemper Lakeshore	Existing	Existing	10444800	10444800 - 1411-River View Coal	OPN	OPN	OPN	OPN - Open		
01770	01770	- Frontier-Kemper Lakeshore	Existing	Existing	10236000	10236000 - 8014-LakeShore Small Jobs	OPN	OPN	OPN	OPN - Open		
01770	01770	- Frontier-Kemper Lakeshore	Existing	Existing	10162500	10162500 - 9013-LakeShore Field Serv	OPN	OPN	OPN	OPN - Open		