

How to Install and Configure Citrix Receiver

OVERVIEW

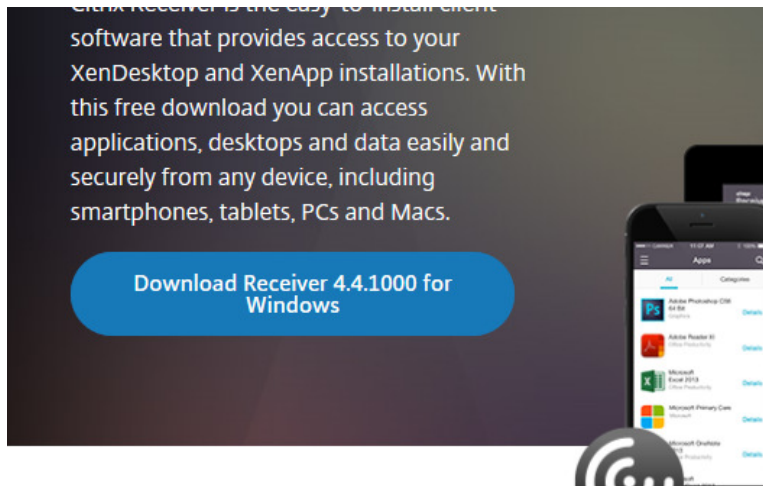
Citrix Receiver allows you to access remote applications published using Citrix technologies.

PREREQUISITES

- Installation requires administrative privileges on the computer.

PROCEDURE

1. In a web browser, go to <http://www.citrix.com/go/receiver.html>.
2. Click on the **Download Receiver ___ for Windows** button.
If you do not see this button, uninstall your existing Citrix Receiver and try again.



3. Open the **CitrixReceiver.exe** file from the previous step. The exact procedure varies depending which browser you are using. Follow one of the examples below:

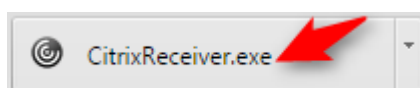
Internet Explorer

Click the **Run** button near the bottom of the screen.



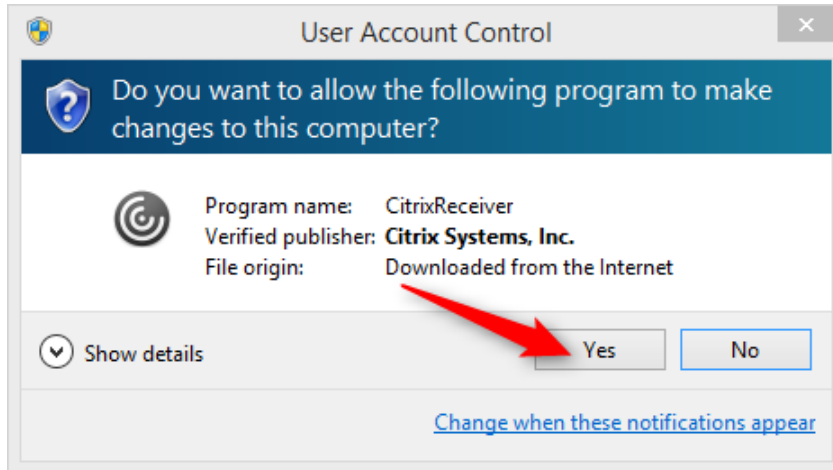
Chrome

Click **CitrixReceiver.exe** button near the bottom left corner of the screen.



How to Install and Configure Citrix Receiver

4. Click the **Yes** button.

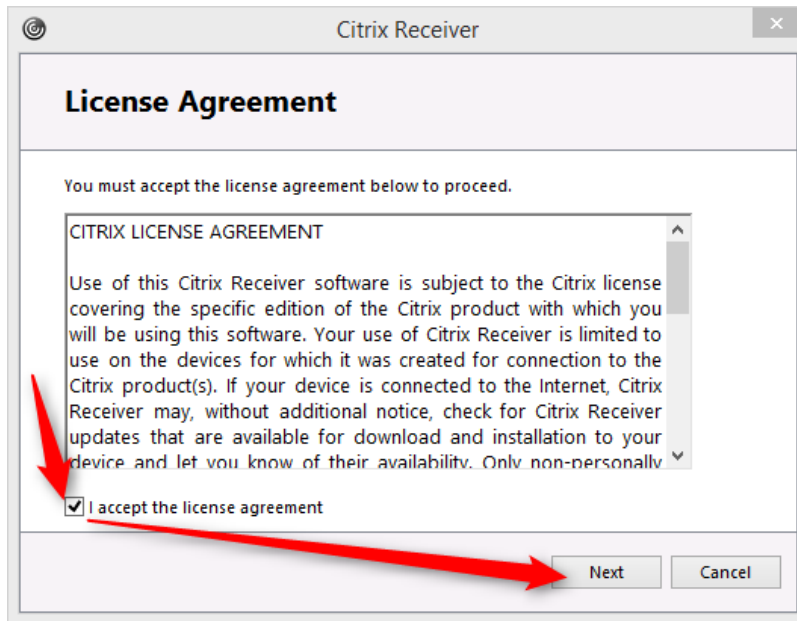


5. Click the **Start** button.



6. Click the **I accept the license agreement** checkbox.
Click the **Next** button.

How to Install and Configure Citrix Receiver

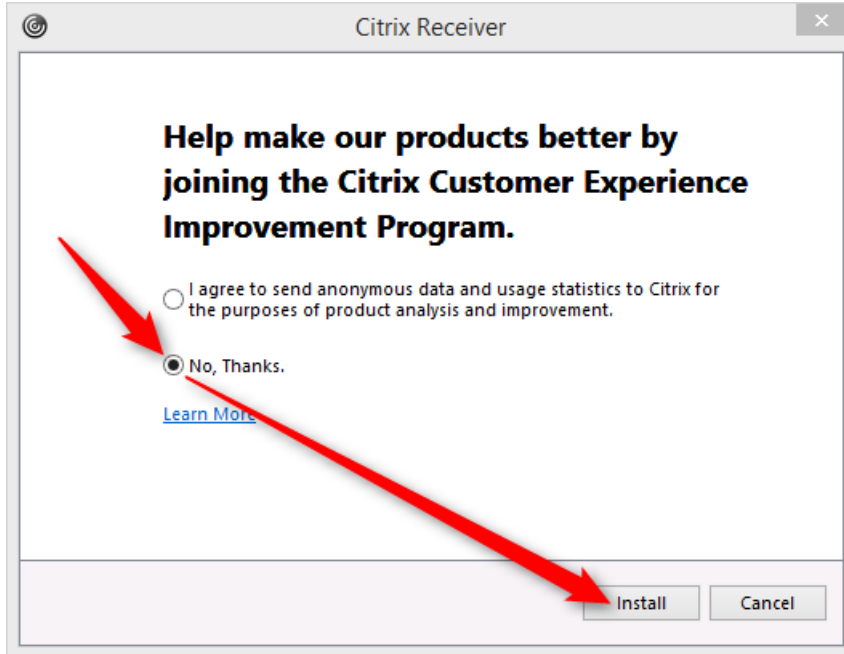


7. Click the **Enable Single Sign-on** checkbox. NOTE: If you do not see this screen, proceed to Step 8. Click the **Next** button.

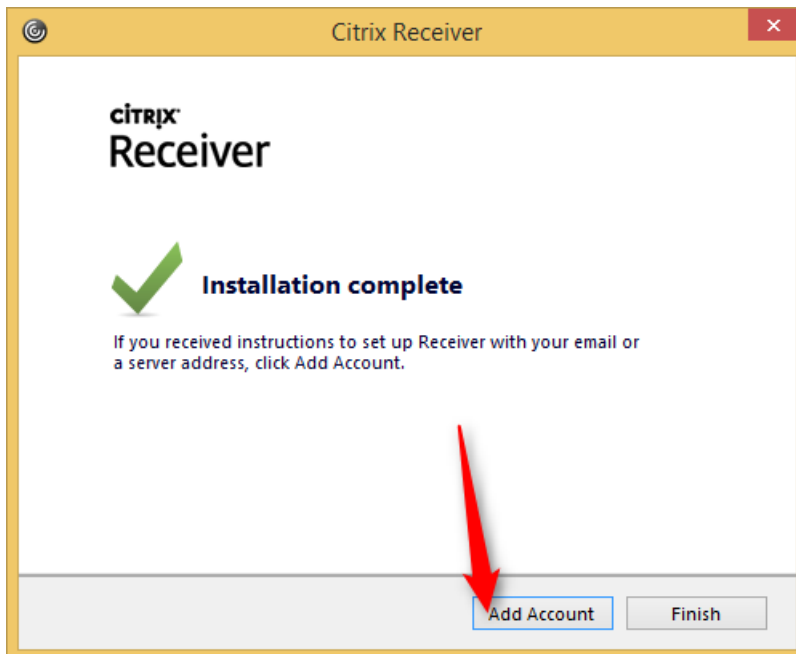


How to Install and Configure Citrix Receiver

- Click the **No, Thanks.** radio button.
Click the **Install** button.

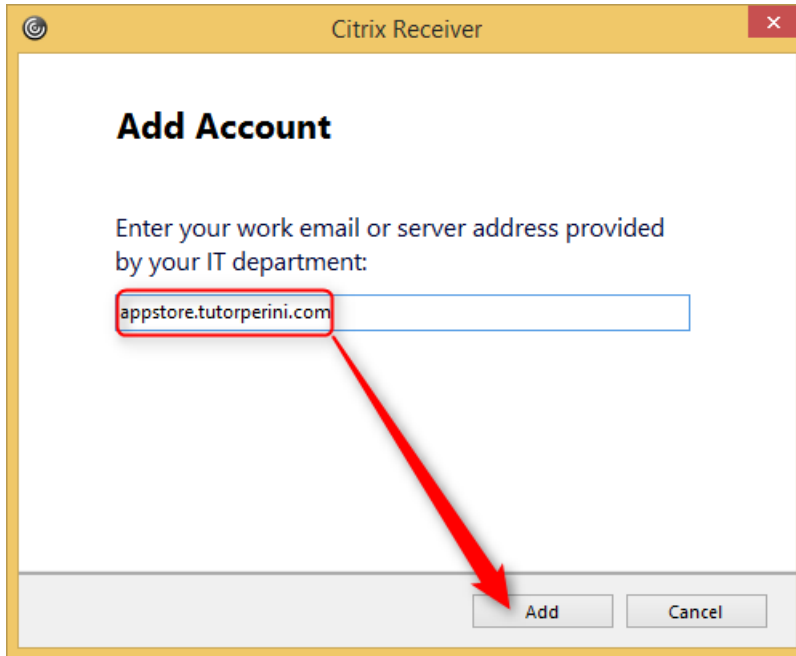


- Click the **Add Account** button.



10. Type **appstore.tutorperini.com**

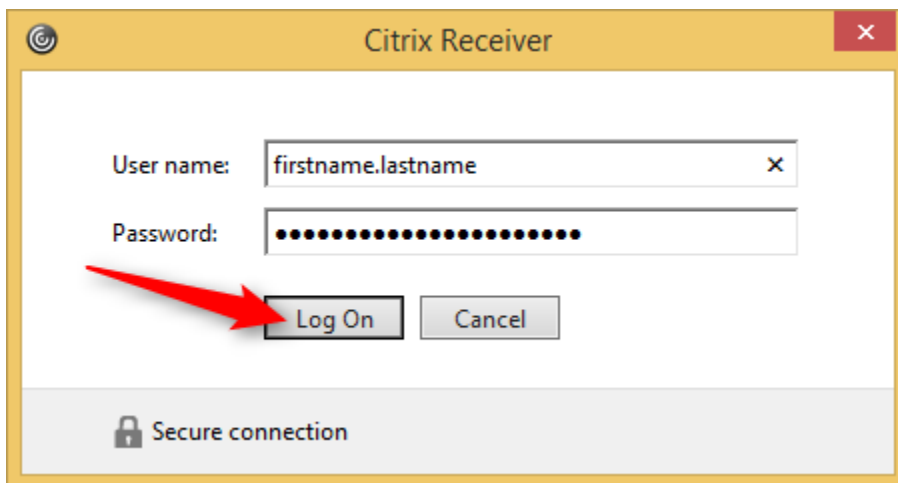
Click the **Add** button.



11. Enter the user credentials.

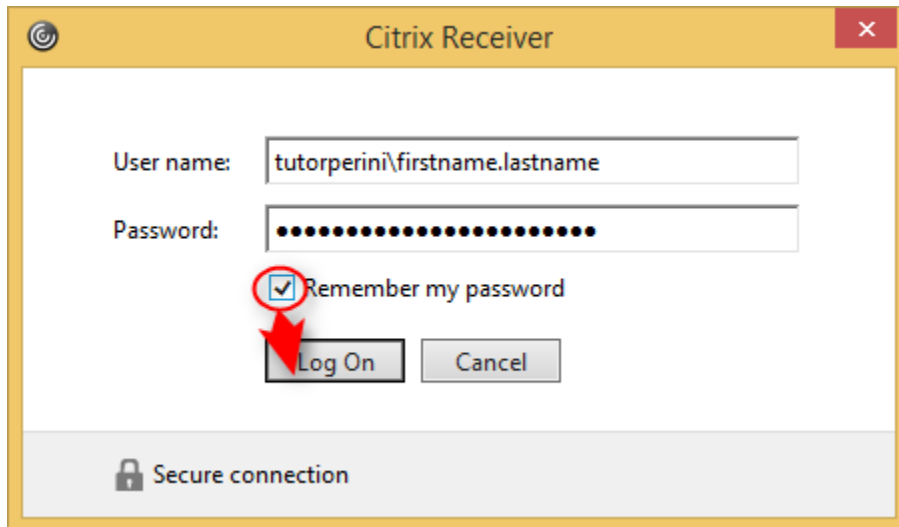
Click the **Log On** button.

NOTE: These are the same username and password that you use for your e-mail account.



How to Install and Configure Citrix Receiver

12. Enter the user credentials again. This time, add **tutorperini** in front of the username.
Check the **Remember my password** checkbox.
Click the **Log On** button.



The image shows a screenshot of the Citrix Receiver login dialog box. The window title is "Citrix Receiver". It contains the following elements:

- User name:** A text box containing "tutorperini\firstname.lastname".
- Password:** A text box filled with black dots.
- Remember my password:** A checked checkbox with a red circle around it and a red arrow pointing to the "Log On" button.
- Log On** and **Cancel** buttons.
- Secure connection:** A status bar at the bottom with a lock icon and the text "Secure connection".